
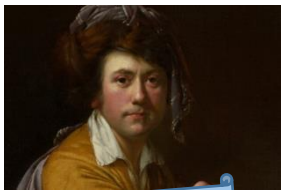


Year Six – Enquiry: Are we a product of our heritage?



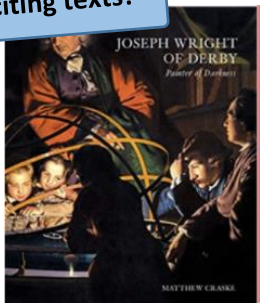
Subject Specific Vocabulary	
legacy	The long-lasting impact of particular events or actions that took place in the past, or in a person's life.
showmen	A person who produces or presents shows as a profession.
Showmen's Guild	The leading Trade Association for the Travelling Fairground Industry
culture	The ideas, customs, and social behaviour of a particular people or society
critique	A detailed analysis and assessment of something
community	A group of people living in the same place, or having a particular characteristic in common, sharing or having certain attitudes and interests.
influential	To have an effect on ideas, opinions or thoughts.
Joseph Wright	An English landscape and portrait painter.
tenebrism	A style of painting that shows dark tones and shadows with <u>contrasting</u> effects of light.

	Sticky knowledge
	A: Joseph Wright was a Derbyshire born artist, known for his portraits and English landscapes. He linked elements of Romanticism with powerful images of science and technology. His depictions of artificial light on the faces of experimenters and their audiences captured the sense of wonder.
	B: Romanticism is an 18th century movement in the arts and literature that emphasized nature, imagination, emotion, and the individual.
	C: Pinxton Porcelain was a porcelain works created by John Coke and William Billingsley in Pinxton in Derbyshire in 1796. John Coke owned and developed the business in partnership with William Billingsley who was a porcelain painter. He later focused on creating the pottery rather than painting it. Pinxton Porcelain is known for producing floral tableware (teacups, saucers, teapots). In comparison, Chinese-influenced porcelain at that time was predominantly blue and white, and it told stories. John Coke wanted education for the locality, therefore he built the site where KJA is now along with the library and other buildings.
	D: Showmen travel the country setting up fairs, including rides, games and eateries. The Showman's Guild is an association that protects the travelling showmen, it has rules to ensure all showmen have equality within the Guild. The Showmen's Guild was set up in 1899 to protect travelling showmen and protect their interests. It still exists today and has grown to have nearly 5000 members. During the war, fairs were closed as showmen had to become soldiers and the women had to go and work in factories, engines and with vehicles. The Showmen's Guild raised funds for the war effort. The showmen's contribution to both the First and Second World War is commemorated each year during the Remembrance Day Parade in London in November.
	E: In art, different tools, techniques and materials can be combined for a range of purposes, strength and aesthetics.
	F. Sketchbooks are used to design, edit and evaluate the effectiveness of a piece of artwork.
	G: The term perspective refers to the representation of objects in three-dimensional space (i.e. for representing the visible world) on the two-dimensional surface of a picture.
	H. Evaluations involve looking back at the experience of designing and making something and considering what went well, what they would change and how it meets the design criteria.
	I. Self-critique is a personal analysis of work in a detailed way. Peer-critique is the detailed analysis of work carried out by a peer. To be effective means to be successful in producing a desired outcome or intended result.



Joseph Wright
Born: 3 September 1734
Died: 29 August 1797

Exciting texts!



- Culture is the ideas, customs and social behaviour of a particular people or society
- Society is a group of people living together in a community
- A cross-sectional diagram shows the inside of products. To make a product stronger it should be reinforced with a strong structure, joins and materials. To make a product stiffer it should be reinforced with more appropriate (denser, thicker) materials. (DT6.3/6.11)
- A product can be made improved by reinforcing areas of weakness e.g. joints.
- To make a product stronger it should be reinforced with a strong structure, joins and materials.
- To make a product stiffer it should be reinforced with more appropriate (denser, thicker)

