

Year Six – Does and economy reflect success?



Subject Specific Vocabulary	
Greenwich Mean Time (GMT)	The mean solar time at the Royal Observatory in Greenwich
Meridian	Imaginary lines which run from the North Pole to the South Pole to create time zones
Prime Meridian	The line of 0° longitude, the starting point for measuring distance both east and west around Earth.
Socio-economically developed countries	Countries such as Ghana and Brazil
Developing country	Countries such as the UK and Italy
The human development index	A system used to compare and rank different countries in terms of their development
Import	To buy goods or services into the country from abroad.
Export	The action of selling goods and services to another country
Fair trade	a way of buying and selling products that allows the farmers to be paid a fair price for their produce and have better working conditions
Mineral resource	Natural resources such as coal, oil, diamonds
Qualitative	methods of data that are written ideas or research
Quantitative	methods of data collection that involves amounts



Exciting texts!



	Sticky knowledge
	A - Time zones are divided by imaginary lines called meridians which run from the North Pole to the South Pole. A time zone refers to any region where the same standard time is kept. Countries to the east of the Prime Meridian are ahead of Greenwich Mean Time (GMT) by up to 14 hours. Countries to the west of the Prime Meridian are behind Greenwich Mean Time (GMT) by up to 12 hours. Greenwich Mean Time (GMT) does not change
	B - Many of the socio-economically developed countries are located in the northern hemisphere, with most of the developing countries in the southern hemisphere . England and Italy are socio-economically developed country which is in Europe, in the northern hemisphere and is one hour ahead of GMT. Ghana is a developing country which is in Africa; Brazil is a developing country which is in South America
	C - The human development index is a system used to compare and rank different countries in terms of their development Population growth impacts development as the faster the population grows, the more pressure is put on a country to provide space, food, water and jobs
	D – Developing countries tend to have higher levels of unemployment, have high birth and death rates and lower life expectancy; tend to generate more income from service sector e.g. tourism; tend to have a lower standard of living; tend to have an unequal distribution of wealth; tend to have a higher illiteracy rate
	E - Economic activities include making, selling, providing, purchasing, distributing and consuming good and services. This can be done through activities such as trade, farming, fishing, running a small business, investing etc. Trade involves the buying and selling of goods and services. The premise of trading is an exchange of goods for money where the price is agreed between the two parties
	F - Import means buying goods or services into the country from abroad. Export is the action of selling goods and services to another country
	G - Fairtrade is a way of buying and selling products that allows the farmers to be paid a fair price for their produce and have better working conditions. There are other ways that trade can be done ethically – Fair for Life is another example.
	H - Countries with mineral resources (coal, oil, diamonds) are more likely to develop quicker as they can sell these for profit. Gold and Diamonds are mined in Ghana. Tin, iron ore and diamonds can be found in Brazil. Coal and natural resources can be found in the UK and Italy.
	I - Ports and industrial areas have strong links to economic growth. Ports allow for travel between different countries; they are the gateway to trading partners. Industrial areas and ports provide jobs. Industrial areas manufacture a wide range of resources that can be sold to support the economy Some large ports in the UK include: The Port of Tyne, Port of Liverpool, Port of Hull and the Port of Grimsby
	J: To analyse is examine something in detail
	K: To draw a conclusion we consider evidence and theory and make up our own mind based on these ideas.
	L To present to a specific audience, we have t understand who the audience is and what messages we want to give.
	M: Qualitative methods of data are written ideas or research, and quantitative methods of data collection involves amounts



Enhancer Sticky Knowledge – DT



A. Some food items such as meat, fish, eggs, milk need to be stored in a cold place e.g. in a fridge. Some food items last longer without going bad if they are stored in a cold place e.g. fruit and some vegetable. Some food items can be kept for longer if they are frozen. Items that are frozen need to be defrosted properly. Many food items have a best before date, before which the food should be eaten, otherwise they may make you unwell



B. **Savoury** dishes are usually or salty or spicy rather than sweet and are eaten as the main dish of a meal. Sweet dishes are sugary and usually eaten as a dessert or pudding



C Working safely means taking precautions to minimise risk of injury to yourself or others To use a tool correctly is to use the tool the same way that it was modelled to you and to use it for its purpose



D Culture is the ideas, **customs** and **social behaviour** of a particular people or society. Society is a group of people living together in a community. When planning and designing it may be important to consider culture and society to be successful for a given audience.



E To pin is temporarily join materials in preparation for sewing. Pattern pieces can be pinned to fabrics to cut them to the correct shape for the product. To sew is joining materials using stitches. To stitch is using a range of methods to create joins with thread and fabric. Back stitch is a continuous line of stitches with no gaps



F To justify design choices we explain our reasoning as to why we used certain ideas to fulfil a given objective



G To evaluate a product we consider successes and challenges that we faced whilst completing a product or design in order to improve next time

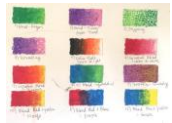


Enhancer Sticky Knowledge – ART



A- **Proportion** is an element of art that compares the size of a part of an object in relation to the size of another part of the same object.

Perspective is the art of representing 3D objects on a 2D surface. **Depth** is the apparent distance from the foreground to background, or near to far, in a work of art.



B - Different paints create different effects (e.g. water, poster, acrylic) - Different techniques create different outcomes (e.g. **pressure**, **layering**)



C - **Composition** is the organization, design or placement of the individual elements in a work of art.



D We sometimes use artist's influence in our work to create different styles and techniques

